



Prime Pedal Karts, LLC
9235 Roe St
Pensacola, FL 32514
850-475-0450
www.primekarts.com

TRACKER

Assembly Instructions and Maintenance Guide



Unpack your Prime Kart.
Remove the top box and lay out all pedal kart components to verify nothing is missing from the package.



Box contains the following:

| | |
|------------------------|---------------------|
| 1 front assembly | 2 rear assemblies |
| 1 rear frame connector | |
| 2 steering columns | |
| 1 front yoke | 1 yoke connector |
| 1 front connector tube | |
| 1 front end connection | |
| 2 drive wheels | 4 coast wheels |
| 2 seats | 2 seat frames |
| 1 front spoiler | 2 steering wheels |
| 1 hardware bag | 1 fender set |
| 1 safety flag | 1 front cover plate |



Unpack the hardware set located inside the steering wheel bag.



Assembly set includes:

- Wheel hub caps (5)**
- Steering wheels (2)**
- Spare tire mounting bracket**
- Seat/seat frame hardware (2)**
- Steering wheel caps (2)**
- Pedal sets (2)**

NOTE: All other hardware is threaded into the corresponding location.
DO NOT remove any of the hardware until the you get to that part of the assembly.

Installation tools.

Tools needed for assembly:

3/8 drive ratchet

sockets: 13mm, 17mm, 19mm

19mm wrench, 15mm wrench

Rubber mallet



Slide the left and right hand brake assembly through each side of the rear connection bracket.



Slide the left side handbrake arm through the left fender support and line up rear connection bracket bottom holes with the two studs on the bottom. Install flat washers, nuts and two bolts in the top holes with flat and lock washers. Tighten using a 13mm wrench. Repeat on the right side.



Connect the right and left brake arms and tighten using 13mm wrenches



Slide the front connection tube into the rear frame assembly on the right and left sides. Install bolt and tighten with 19mm wrenches



Slide the front yolk assembly into the connection tubes.



Install the steering shafts. The left steering shaft turns. The right is fixed. The front bolt threads into the bottom tube. Install the washer and lock nut and tighten with a 15mm wrench.



Line up the steering bracing rod brackets with the frame. Install the washers and nuts and tighten using a 15mm wrench.



Install the rear fenders.

Locate the 2 fenders and identify the left and right fender by looking on the inside of the fenders and find L for left and R for right.



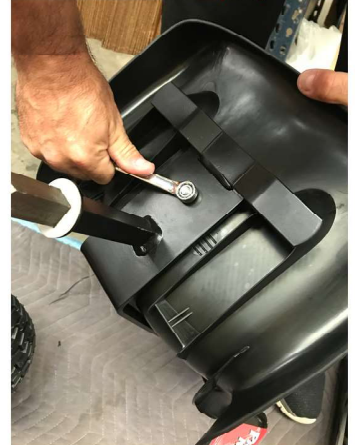
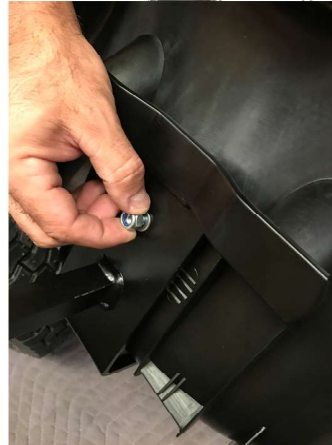
Install the fenders by sliding them over the fender support bracket as shown and lightly tap them with a rubber mallet. You may need to move the hand brake lever tab to fully install the right side fender.



Locate the drive wheels.

The drive wheel does not have a bearing on each side like the coast wheels do. Instead there is a bushing on one side and a star pattern on the other side.

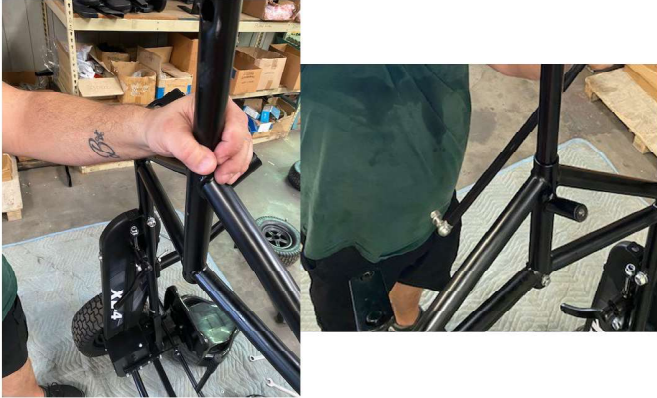
Slide the drive wheel over the square on the drive axle until the inside of the wheel makes contact with the stop washer. A rubber hammer may be used. Reinstall the bolt and washer and tighten using a 17 mm socket.



Slide the metal seat frame into the slot on the back of the plastic seat and line up the hole on the seat frame with the hole on the seat.

Insert the seat bolt through the plastic seat then attach the washer and nut on the back of the metal seat frame using a 13mm wrench or socket.

Install the front frame connection tube into the yoke and connect with the bolt and nut. Note: the slotted hole should be on the bottom side of the kart. Tighten with 13mm wrench



Install the washer and lock nut onto the bracing rod threaded end and tighten using a 19mm wrench or socket.



Install front end connection to the end of the connection tube. Install bolt and nut and tighten using a 15mm wrench.



Install the steering linkage to the bottom of the left side steering shaft. The lock nut will be on the top side. Tighten using a 13mm and a 19mm wrench.



Install the steering wheels and tighten using a 13mm socket. Once tight, attach the steering wheel cap with a rubber hammer.



Install spare tire mounting bracket. It simply screws into the frame. Attach the spare tire using the bolt and tighten using a 17mm socket.



Maintenance

Prime Pedal Karts are designed and built to stand up to the most demanding use. But just like a car or truck, routine maintenance is required to keep your pedal kart performing for many years of use.

| Item | Commercial Use | Consumer Use |
|----------------------|-----------------------------|-----------------------------|
| Front chain tension | Weekly | Monthly |
| Rear chain | Every 2 weeks | Every 3 months |
| Crank bolts | Weekly | Monthly |
| Wheels and tires | Daily | Daily |
| Steering adjustment | Weekly | As needed |
| Grease front axles | Monthly | Every 6 months |
| Transmission | Weekly | Every 6 months |
| Frame | Weekly | Monthly |
| Nuts, bolts & pedals | Daily - check for tightness | Daily - check for tightness |

Please Note: Periodic maintenance must be performed on your pedal kart to keep it in safe and good working order. The items listed here are some common components that will need periodic adjustment or replacement. This maintenance guide is not meant to be a complete overhaul manual. If you have any questions, please contact Prime or an authorized dealer. Current replacement parts for your model can be found at our website www.primekarts.com

1. Drive Chain

The chain used on your Prime Pedal Kart is a heavy duty chain that is used on profesional BMX type bicycles and has a high tensil strenth for rugged use. However, like all chains, they will stretch with use over time. It is important that they be checked for proper adjustment. To check the front chain, remove bolt (A) and lift the top chain guard. There should be about 1/2" travel by pushing on the center of the chain. If the chain is too tight, the transmission and drive components will wear out quickly and the kart will be hard to pedal. The chain should be checked weekly for commercial or rental use and monthly for consumer use.

To adjust the front chain, loosen bolt (B) and nut (C)

To tighten the chain, turn nut (D) clockwise to tighten the chain. Turn counter-clockwise to loosen. After the proper chain tension is set, re-tighten (B) and (C)



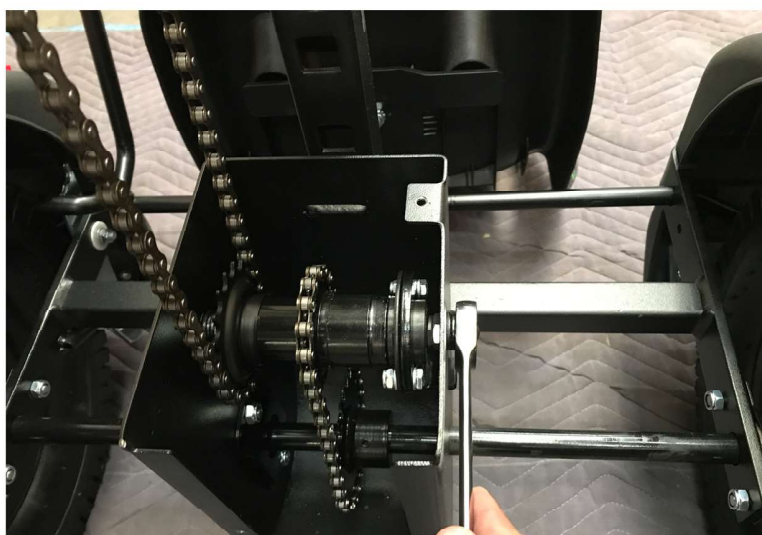
2. Rear Chain

Remove the top and bottom chainguard and loosen the front chain as described in the previous step.

Next, take off the rear transmission cover by removing the 3 bolts.

Next, loosen the nuts on the outside of the transmission cover and slide the transmission forward to tighten the rear chain. The chain should have about 1/4" up and down movement in the center. When the chain is set at the desired tension, re-tighten outside nuts on the transmission. The rear chain should be checked after the first week of use. Then again monthly for commercial and rental use, yearly for consumer use.

NOTE: After the back chain has been adjusted, the front chain will also need adjustment (refer back to the previous step to adjust)



3. Crank bolts

Using a 14mm socket, check that crank bolts are tight. Be careful not to over tighten. Check the bolts weekly to make sure they have not come loose.



4. Tires and wheels

The wheels are made out of a strong flexible elastomer that allows it to slightly flex if there is impact, unlike a metal rim that will dent and be damaged. If you notice any cracks in the rim, it's time to replace it. The wheels on Prime Pedal Karts are universal for the coast wheels and drive wheel. If the wheel bearings become damaged, replace them as soon as possible. The proper tire pressure is 28 PSI for all wheels. **DO NOT EXCEED 30 PSI.** Please note, low tire pressure can also cause an issue by putting stress on the inner tubes, especially when applying the brakes to the rear tires. Tires should be checked daily in commercial rental use. If tires become worn or damaged, replace them immediately.

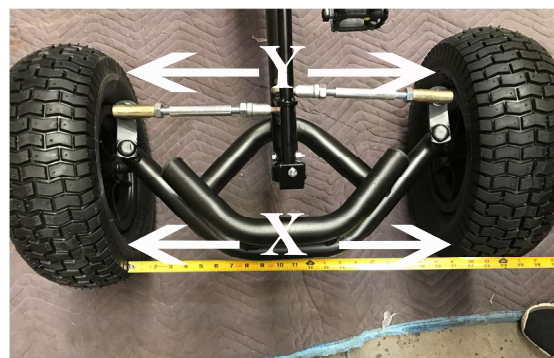
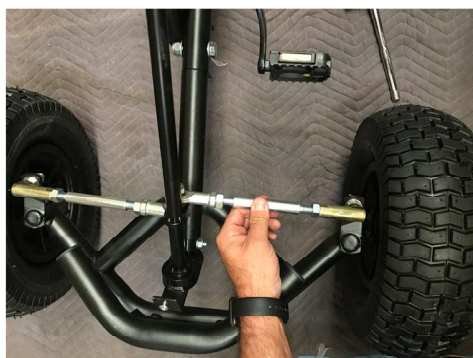
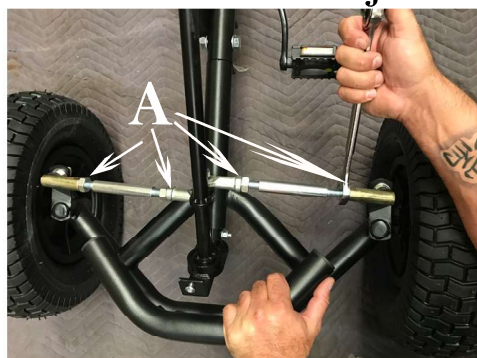
5. Front axles and steering column

Grease the steering wheel column and both front axle zerk fittings every 3 months. Wipe off the excess grease after you have greased the axle.



6. Steering adjustment

If the front wheels are hit hard during impact, it is possible for the front end of the pedal kart to go out of alignment. The signs of this are excessive or uneven wear on the front tires. To adjust the front wheels, first make sure the steering wheel is centered, then loosen all 4 jam nuts (A) on the tie rods. Next, turn the center of each tie rod to move the front wheels closer together, or further apart. The dimensions from inside front tire to inside front tire (X) should measure the same as the inside back tire to inside back tire (Y). Make sure to retighten all 4 jam nuts. **NOTE:** For Tracker model, (not shown) only the bottom steering arm between the axles needs to be adjusted.



7. Rear axle and sprocket

Production models after June 2012 have removable axles and adjustable rear sprockets. To adjust the sprocket, loosen the set screw to align the sprocket with the sprocket on the transmission



8. Coaster brake/transmission

The mounting nuts need to be checked for tightness bi-weekly. If they loosen up, damage to the transmission may occur. See section 2 for chain adjustment. There are no user serviceable parts with the coaster brake so if the part becomes worn or damaged, replace it with a new coaster brake transmission..

9. Steel Frame

The frame of the pedal kart is made from strong heavy wall steel tubing and is protected with durable powder coat paint. If the paint coating becomes damaged exposing the bare steel, touch up the area with any type of close match spray paint. to keep the frame from rusting.